



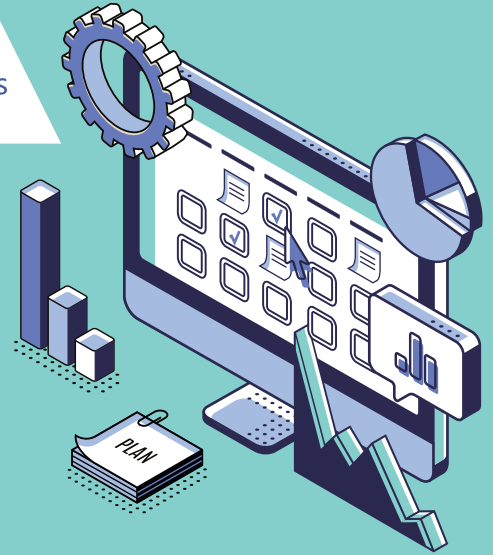
Curricula

MaivenPoint



Microsoft Teams

Collaborative Learning in the hybrid workplace

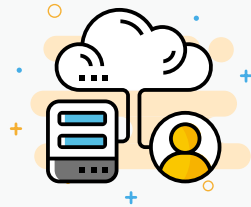


Bring your learning into one place with Microsoft Teams and Curricula LMS



Learn in the flow of work

Achieve greater efficiency. Avoid App hopping and wasting time by placing learning in the flow of work.



A Hybrid Learning community

Create a community between learners to drive collaborative learning in a hybrid work world



Familiarity & Easy Access

A more consistent and Single-Sign-On experience for both learning and work in the same digital workspace – making learning part of everyday work.

A Future-Proof Learning Management System



Curricula LMS – Microsoft Teams integration simply removes any background noise that could distract your employees from engaging with your learning programs. Integration saves on confusion, any pain of navigating between systems, and helps you maximise the software you're already using.

Integrate Existing Training Content

go1 LinkedIn Learning



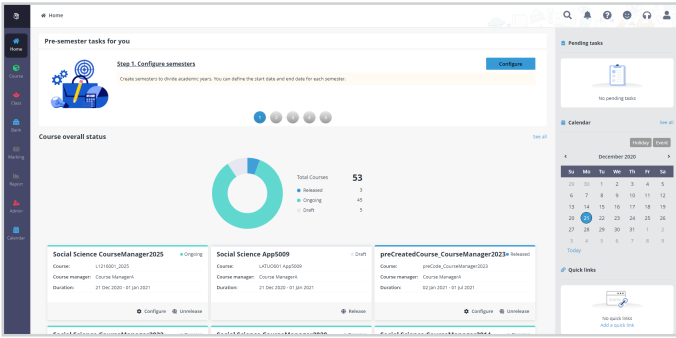
SANS

{xAPI}

SCORM

Don't see the training content provider you are using? Use our open APIs to make integrating with Curricula an easy experience

Curricula for Collaborative Learning in the hybrid workplace



Curricula that Employees love

Learning your way! when they want, where they want and how they want.

- **Learn in the flow of work.** Make learning part of everyday work for busy workers. With easy access (Single-Sign-On) - learning and work can stay in the same digital workspace.
- **On-the-go learning.** Fully integrated in Microsoft Teams gives your learners the freedom to work and learn anywhere, anytime.
- **Peer to Peer Collaborative learning.** A collaborative learning platform like Microsoft Teams enhances engagement and participation, giving employees the chance to stay connected, teach and learn from one another.
- **Knowledge share & discussion opportunities.** Facilitate effective communication among hybrid working employees with the Microsoft Teams chat feature to host discussions. Trainers can monitor discussions and make sure they are focused on the right direction but also discover areas where employees could use some extra training
- **Game-based learning.** By using the gamification feature (awarding badges or tracking scores), you can help employees collaborate and learn in a fun environment.
- **Online Support Learning assistant Delphi.** Automatically post notification in a Teams channel before training starts, and answers common questions about courses, lessons, and tasks.

Curricula that Learning & Development Managers trust

Scale learning and development across the business.

- **Employee Development.** Close skills gaps and develop your people—a win-win for talent retention and business growth. Give your people continual opportunities to learn new skills or re-skill. Maximize Learning Retention
- **Onboard New Employees.** Shorten ramp time for new employees. Welcome new hires with video, assign mandatory training, and initiate checkpoints with managers.
- **Easier Compliance Training.** Ensure employees are up to date on their compliance responsibilities.
- **Measure the impact** of your employee learning programs and uncover learning insights with centralised reporting

Curricula that's Easy-To-Manage for Trainers

Automate tasks to scale your training

- **Optimise your training experience** with flexible ways to create, manage and delivery training content.
- **Scale training** through custom learning journeys that ensures content is delivered to the right learners at the right time with minimal administrative input
- **Quick, easy course creation and roll-out.** Create courses from scratch or upload existing SCORM content or import industry ready-made content
- **Assessments** Create and add quizzes & final assessments. Don't have time to create a quiz, use our AI powered quiz generation.
- **Reporting.** Learner engagement and completion levels ; Performance on an individual and/or group level; Identify knowledge gaps; Areas in which course material could be adapted
- **Easily manage training** in the LMS including enrolment, learning paths, automated reminders and notifications, attendance records, training content repository, tasks, and marking.
- **Add a post-training survey** to your course to see how well the content met trainee expectations.

MaivenPoint is more than a product, we're your partner • Since 2016, we've been helping our customers stay ahead of the training, learning and assessment curve. Our SaaS solutions are built to scale and built to last. We take care of the tech, so you can focus on learning and development.

How to Buy

+44 (0) 207 421 5199 | sales_uk@avepoint.com | Start your free trial today: www.avepointonlineservices.com
AvePoint EMEA Headquarters | 3rd Floor, Watchmaker Court | 33 St John's Lane | London, EC1M 4BJ