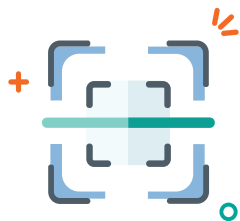




Whether you are responding to mergers, acquisitions, divestitures, or simply restructuring your Microsoft 365 tenant, AvePoint Fly will revolutionize the migration experience with our first-to-market innovative SaaS solutions for Power Platform. Execute in-tenant and tenant-to-tenant migration of Power Apps and Power Automate flows, allowing users to keep business moving forward.

# Power Platform Migration **with Fly**

## Migrate or Restructure Content Across Microsoft 365 Tenants in Three Easy Steps



### **STEP 1** **Scan**

When setting up a connection to your source tenant, you can schedule a daily scan that will inventory the Power Apps and Power Automate Flows in your environment. This inventory can be used to save boatloads of time when it comes to setting up your migration mappings to the destination.



### **STEP 2** **Migrate**

Move Microsoft 365 workspaces, including Power Apps and Power Automate Flows. With the ability to move apps and flows from one Power Platform environment to another or from tenant to tenant. Then map, filter, schedule, or just migrate in real-time.



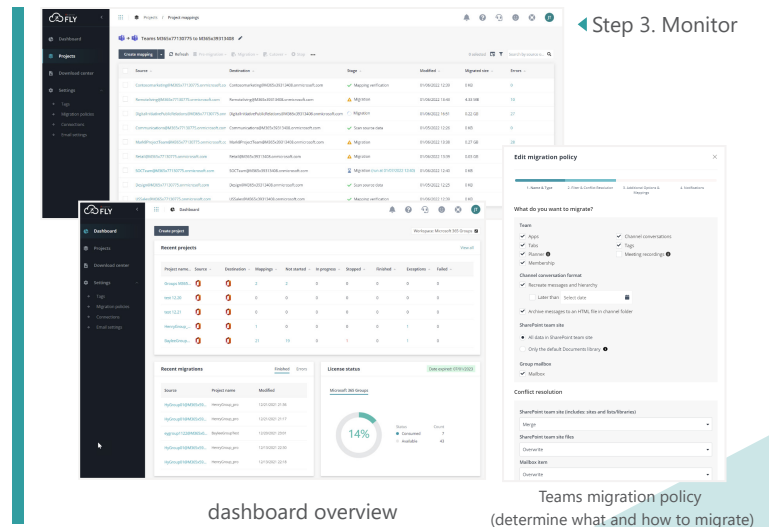
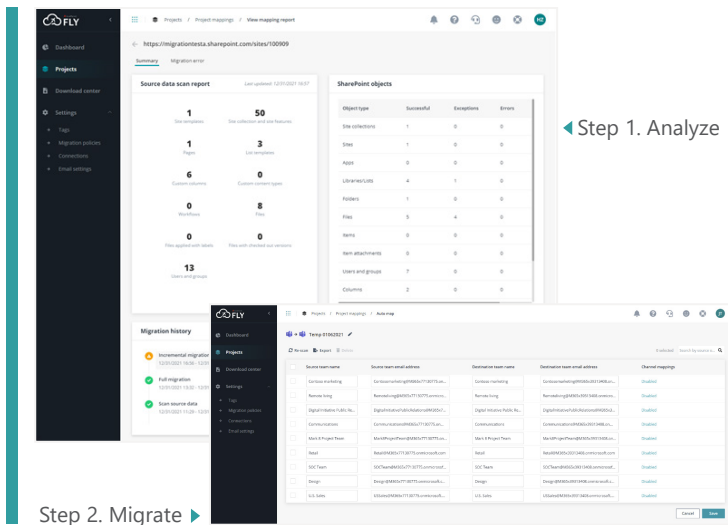
### **STEP 3** **Monitor**

Track migration status and progress on the dashboard. Validate your migration progress, generate reports highlighting actions taken, and always be in the know with flexible project reporting capabilities.

**Unlimited content migration with no data caps. No infrastructure hassle or installation needed. 24/7 live support.**



Fly provides an all-in-one Azure SaaS based migration solution for Microsoft 365 workspaces that enable your teams to migrate custom-built Power Apps and Power Automate flows. Our next-generation SaaS solution enables you to simply login and begin your next project. Move, migrate, or restructure unlimited data easily and with best in class fidelity. Built-in discovery, mapping, and scheduling enable you to clean up or clean out data and reach your goals. Rest assured that 24/7 live support comes standard with AvePoint SaaS solutions.



## PRE-MIGRATION ANALYSIS

- **Get an up-to-date inventory of your environments** and the Power Apps and Power Automate Flows within them
- **Create migration projects according to your time-tables** – define the scope, filter policy, method, and schedule. Fly's automapping feature makes setting up your mappings a breeze from your inventory

## MIGRATE

- **Perform in-tenant or tenant-to-tenant migration of Microsoft 365 workspaces**, including Power Apps, Power Automate Flows.
- **Restructure on the fly.** Support ongoing restructuring to respond to organizational changes in real time.
- **Migrate on your time.** Set up a schedule or migrate in real time.

## MONITOR

- **Track the progress.** Monitor migration status, progress, and performance on the built-in dashboard.
- **Multiple Workload Error Reporting.** The ability to see all errors in a single file, regardless of workload type or when working on multiple projects for a single workload.
- **Validate the migration.** Report on migrated data volumes as well as site, list, library, and item counts. Understand migration trends across sources and destinations.
- **Exec-level analysis.** Download or email executive reports on job count and status, object count and status, and migration trend analysis to highlight the actions taken during the migration.
- **Standard, stand-out Support.** Our support team is standing by, 24/7. If you need an extra hand, explore our Migration Services. Our experts have more than 20 years of experience and are here to help.

For a comprehensive list of new features in this release, please view our [Release Notes](#).

## How to Buy FLY

+1 844-567-1659 | [Sales@AvePoint.com](mailto:Sales@AvePoint.com) | Start your free trial today: [www.avepointonlineservices.com](http://www.avepointonlineservices.com)  
AvePoint Global Headquarters | 525 Washington Blvd, Suite 1400 | Jersey City, NJ 07310