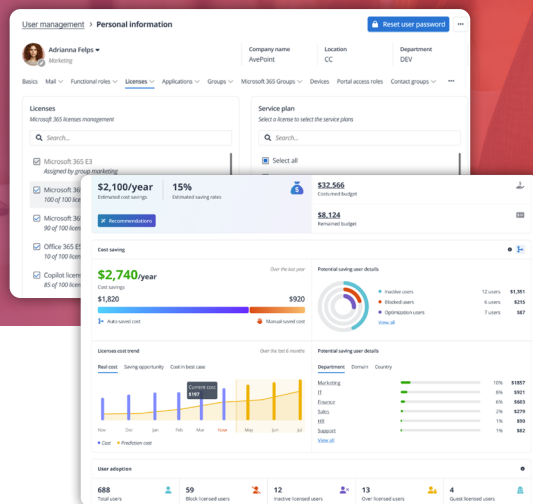




Microsoft 365 User & Device Management for MSPs

Secure identities and devices at scale—automatically. AvePoint Elements User & Device Management empowers MSPs to govern Microsoft 365 accounts and endpoints from one platform. Automate provisioning, enforce compliance, and strengthen access security across every client.



Key Capabilities & Use Cases

Strengthen Endpoint Security

- Use Intune policies to enforce encryption and compliance.
- **Result:** Prevent data loss and secure remote endpoints.

Centralized User Oversight

- Manage user identities and access from one dashboard.
- **Result:** Faster audits, fewer misconfigurations.

Tenant-Level Monitoring

- Visualize compliance and device enrollment status.
- **Result:** Proactively remediate and improve SLAs

Secure Deprovisioning

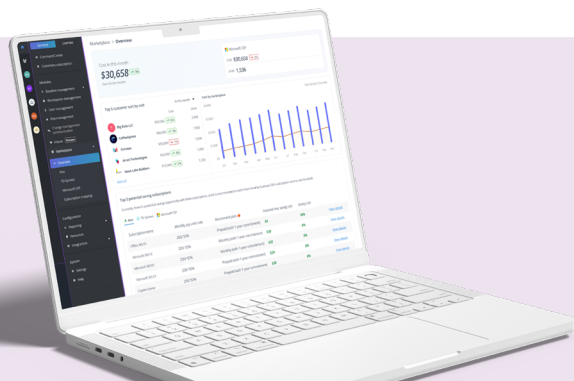
- Auto-remove accounts and revoke access.
- **Result:** Eliminate stale identities and save on licenses.

Policy-Based Provisioning

- Use templates to onboard users and assign access.
- **Result:** Faster, error-free onboarding.

Privileged Access Management

- Audit admin activity and alert on changes.
- **Result:** Prevent insider risk and support compliance.



WHY IT MATTERS TO MSPS

- **40% more revenue:** Offer identity security as a recurring service.
- **Fewer breaches:** Spot risky accounts and endpoints early.
- **Lower cost:** Automate manual provisioning tasks.
- **Audit-ready:** Track and report admin access and identity logs.
- **AI-Ready:** Build trust in Microsoft Copilot with secure governance.



ELEMENTS
PLATFORM
Powered by AvePoint

Request a Demo of User & Device Management in AvePoint Elements today!