



Migrate from SharePoint Server, Exchange, Google Workspace, DropBox, Box, Legacy File Shares, E-mail and start your client's digital transformation

Microsoft 365 Migration with Fly for MSPs

Deliver Projects on-time, keep more money in your pocket and become the co-pilot of your client's digital transformation.

Resolve Your Customers' Migration Situation in Three Easy Steps



STEP 1: Simple and Unlimited

Migrating Mailboxes, Cloud Drives, Sites, Slack, Workspaces or more? Don't let billing become a bottleneck. One object, one license and no limits or surprises on things like Mailbox size or performance caps.



STEP 2: FREE Discovery

Our discovery and scanning engine is FREE. No strings attached. Understand exactly how much and what kind of data a client has. Accurately scope and bill migration projects.



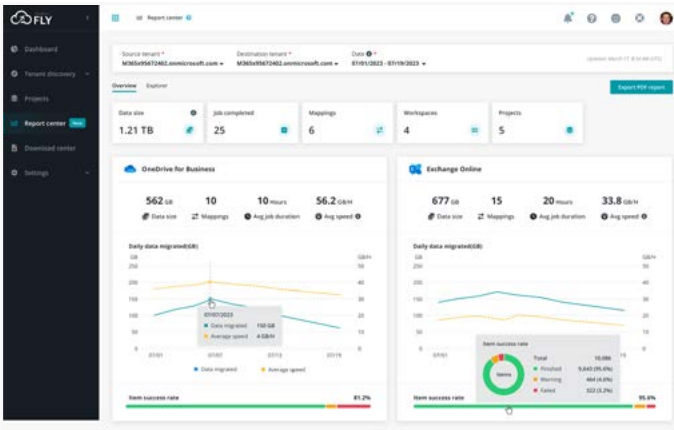
STEP 3: More Money in Your Pocket

Boost your profit margins by 46% or more per mailbox SharePoint Site, Microsoft Team or Group compared to other solutions.

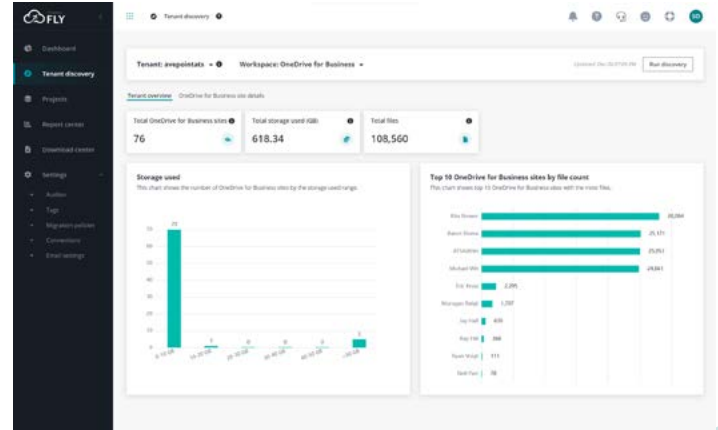


Build Out a Migration Practice on Your Terms

Fly comes in a self-hosted or SaaS offering ensuring you can meet the needs of every client and your practice. Pricing is the same and discovery is always free. Setup your clients for success and open up new revenue streams with the rest of the AvePoint Confidence platform. Perform granular migrations, cross-tenant migrations and continuously restructure data in case mergers, acquisitions, divestitures, or other Microsoft 365 tenant restructuring needs.



Understand the status of all or specific migration projects in our migration report center. Export reports to stakeholders in seconds or drill down to item level details



Perform Discovery with ease and for free. Get a full picture for how much data you're dealing with, how many drives and users you need to migrate and so much more.

PRE-MIGRATION ANALYSIS

- **Know the risks.** Identify potential bottlenecks or hurdles to a success migration project early whether its something as simple as illegal characters in a file name, customized web parts, site templates, web pages, or groups and users that require updating, mapping, or deleting.
- **Get the details.** Understand their existing information architecture, data size, users, workflows, site activity levels, and customizations. Export to CSV for deeper analysis.
- **Create a plan.** Create a migration plan according to their project timetables – define the scope, filter policy, method, and schedule. Plans can be reused in the future. Use Plan Groups to apply schedules in bulk, across multiple sources for increased efficiency.

MONITOR

- **Track progress.** Monitor the migration status of all your clients at once in our migration report center, or by setting up a SQL connection to leverage our migration database. Publish reports with one click to PDF and CSV or create dynamic reports that analyze throttling, performance, migration progress, common errors and more with our Power BI templates!
- **Validate the migration.** Report on migrated data volumes as well as site, list, library, and item counts. Understand migration trends across sources and destinations.
- **Automated Outlook configuration.** FLY Assist can be installed automatically to complete the final Outlook configuration tasks or sent to end users to guide them through the final steps.
- **Exec-level analysis.** Download or email executive reports on job count and status, object count and status, and migration trend analysis to highlight the actions taken during the migration.

MIGRATE

- **Drag and drop.** Move content from on-premises (SharePoint 2010, 2013, 2016, 2019, Exchange, Exchange Public Folder, PST files, and File shares) or the cloud (Google Drive, Gmail, IMAP/POP3 mailboxes, Slack, Box, DropBox or other Teams or Microsoft 365 instances) into Microsoft 365 with drag-and-drop ease.
- **High speed.** Migrate at top speeds using built-in Microsoft best practices. Use prime APIs to bulk upload the content within their migration scope into Azure BLOB storage plus App tokens for Microsoft 365 authorization to minimize throttling risks.
- **Take only what you need.** Migration Policies can filter content based on properties or metadata and selectively include or exclude granular objects (webparts, navigation, Apps, views, permissions, and even content!) so you can take what's relevant and leave the rest behind.
- **Tenant-to-tenant migration.** Migrate their SharePoint Online, Exchange Online, Teams, and Groups between different Microsoft 365 tenants.
- **Transform their data.** Comprehensive mapping ensures data from unlike systems are properly reflected and retained.
- **Take advantage of Microsoft 365 features faster.** Convert mailboxes to Group type, map metadata into Managed Metadata or Labels, even migrate content into Teams' sites
- **Migrate at scale and on your terms.** Set up a schedule to orchestrate migrations across thousands of objects or migrate ad-hoc in real time.
- **Resume or rerun failed or stopped jobs.** Pick up the job from where it stopped or failed – or rerun jobs to correct failed files or items. You won't get charged twice either.

For a comprehensive list of new features in this release, please view our [Release Notes](#).

How to Buy FLY

+1 844-567-1659 | www.avepoint.com/partners/buy
 Learn about AvePoint Cloud Migration with FLY, visit avepoint.com/products/cloud/fly.
 Find out about AvePoint Partner Program, visit avepoint.com/partners.