



AvePoint

FLY

Easily migrate and consolidate your critical mail, content, and collaborative workspaces into Microsoft 365

Microsoft 365 Migration with Fly Server

Resolve Your Migration Situation in Three Easy Steps



STEP 1
Analyze

Know what's relevant and important, or just collecting dust before your move. Understand your information architecture, customizations, and workflows that may impact your project to avoid potential risks and improve migration project planning.



STEP 2
Migrate

Move entire drives, mail instances, site collections, or individual lists and libraries to achieve a desired end goal with drag-and-drop ease. Then map, filter, and schedule the move, or just migrate in real time.



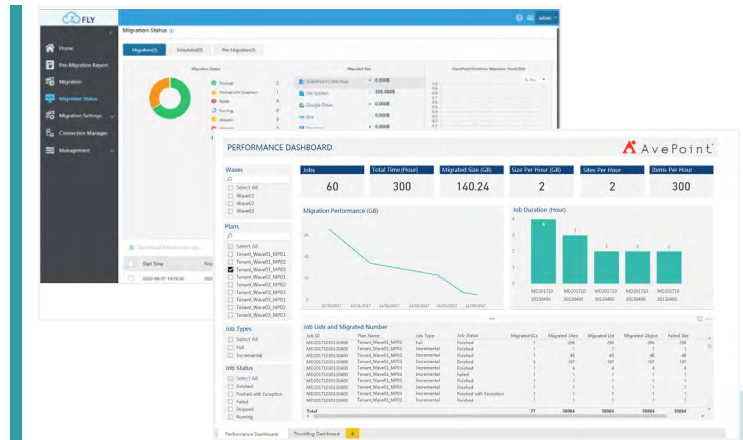
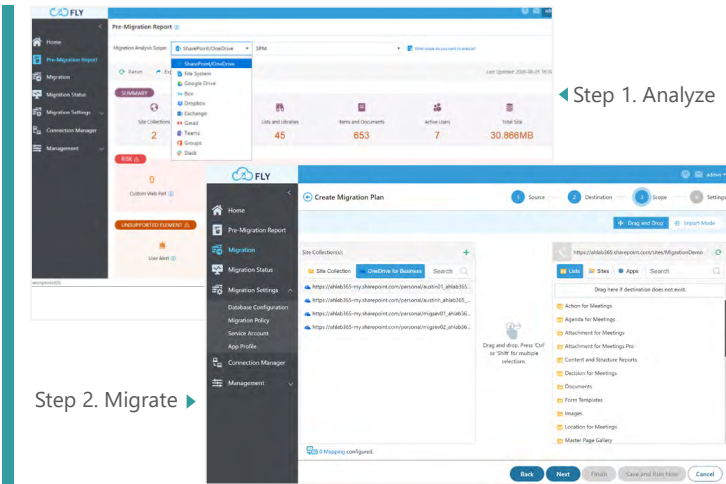
STEP 3
Monitor

Track migration status and progress on the dashboard, validate your migration progress, generate reports that highlight actions taken, and always be in the know with automated updates sent directly to stakeholders.

The Swiftest, Simplest Migration Around



Fly Server is one of the fastest tools on the market to consolidate and migrate on-premises Exchange, SharePoint, and file shares, or other cloud content in Microsoft Teams, Microsoft 365 Groups, Box, Dropbox, Slack, and Google Drive, into your Microsoft 365 cloud. Or, upgrade your previous SharePoint versions and files into SharePoint 2019. If you're looking to clean up or clean out data, are on a tight timeline, or an even tighter budget, Fly Server can help. Choose a super-light install package for install-free library and folder moves, and you'll be ready for takeoff in a jiffy!



Step 3. Monitor (using built-in dashboards or Power BI Templates)

PRE-MIGRATION ANALYSIS

- **Know the risks.** Identify customized web parts, site templates, web pages, or groups that require updating, mapping, or deleting.
- **Get all the details.** Understand your existing information architecture, data size, users, workflows, site activity levels, and customizations. Export to CSV for deeper analysis.
- **Create a plan.** Create migration plans according to your project timetables – define the scope, filter policy, method, and schedule. Plans can be reused in the future. Use Plan Groups to apply schedules in bulk, across multiple sources for increased efficiency.

MONITOR

- **Track the progress.** Monitor migration status and progress on the built-in dashboard, or by setting up a SQL connection to leverage our migration database. Create dynamic reports for throttling, performance, migration progress, and more with our Power BI templates!
- **Validate the migration.** Report on migrated data volumes as well as site, list, library, and item counts. Understand migration trends across sources and destinations.
- **Automated Outlook configuration.** Fly Assist can be installed automatically to complete the final Outlook configuration tasks or sent to end users to guide them through the final steps.
- **Exec-level analysis.** Download or email executive reports on job count and status, object count and status, and migration trend analysis to highlight the actions taken during the migration.

MIGRATE

- **Drag and drop.** Move mail (Exchange, IMAP/POP3, Gmail), files (Google Drive, Dropbox, Box, OneDrive, Files shares, Exchange Public Folders), and collaboration (SharePoint 2013, 2016, 2019, other Microsoft 365 and MS Teams instances) from on premises or other cloud locations into Microsoft 365.
- **High speed.** Migrate at top speeds using built-in Microsoft best practices. Use prime APIs to bulk upload the content within your migration scope into Azure BLOB storage plus App tokens for Microsoft 365 authorization to minimize throttling risks.
- **Take only what you need.** Migration Policies can filter content based on properties or metadata and selectively include or exclude granular objects (webparts, navigation, Apps, views, permissions, and even content!) so you can take what's relevant and leave the rest behind.
- **Tenant-to-tenant migration.** Migrate your SharePoint Online, Exchange Online, Teams, and Groups between different Microsoft 365 tenants.
- **Transform your data.** Comprehensive mapping ensures data from unlike systems are properly reflected and retained.
- **Take advantage of Microsoft 365 features faster.** Convert mailboxes to Group type, map metadata into Managed Metadata or Labels, even migrate content into Teams' sites.
- **Migrate on your time.** Set up a schedule or migrate in real time.
- **Resume or rerun failed or stopped jobs.** Pick up the job from where it stopped or failed, or rerun jobs to correct failed files or items.

For a comprehensive list of new features in this release, please view our [Release Notes](#).

How to Buy Fly Server

+1 844-567-1659 | Sales@AvePoint.com | Start your free trial today: www.avepointonlineservices.com
 AvePoint Global Headquarters | 525 Washington Blvd, Suite 1400 | Jersey City, NJ 07310