



Let the migration experts take you to Office 365 or SharePoint faster and with less risk.



Migration As A Service (MAAS)

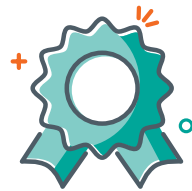
The White Glove Approach to Migration

AvePoint Migration as a Service (MaaS) is a white glove approach that handles migration complexity so you don't have to. Industry-leading migration technologies and best practices are applied by the experts who know them best – ensuring your smooth transition to Office 365 or SharePoint from start to finish.



World-Class Expertise

AvePoint's team of Microsoft-certified engineers has moved various US government agencies to Office 365.



Award-Winning Tools

AvePoint's suite of industry-leading migration & data protection tools have been used to discover, classify, protect and move over 8 petabytes (PB) of data from more than a dozen source systems.



Proven Methodology

AvePoint's compliant migration methodology embodies best practices honed on the largest and most complex Office 365 migrations around the globe.

AvePoint's Migration Experience

8 PB

Migrated

2,000+

Customers

500 TB

Largest Project

What You Get

AvePoint Migration as a Service (MaaS) is a full consultation and implementation service. Our experts work with your scope and requirements to design and execute a thorough, phased migration plan.

 Discovery <p>Perform a comprehensive review of your business needs as well as the current farms that make up your production environment.</p>	<ul style="list-style-type: none">• Source customization and data analysis• Data pruning and classification• Migration refactoring
 Assessment <p>Identify and fill gaps in your governance or hardware requirements to build an outline for the execution phase.</p>	<ul style="list-style-type: none">• Data categorization• Data filter and mapping• Customization inventory and remediation
 Pilot <p>Test an end-to-end migration in your production environment to identify areas where performance enhancements can be made.</p>	<ul style="list-style-type: none">• Throughput modeling• Communication and reporting framework• Migration schedule based on pilot speed characteristics.
 Execution <p>Run full and incremental migrations from source to destination, and provide status reports to stakeholders and business users.</p>	<ul style="list-style-type: none">• Migration execution• Compliance scanning and reporting• User acceptance testing and data validation
 Onboarding <p>Synchronize changes made in the source environment during execution, and transition users into the destination environment.</p>	<ul style="list-style-type: none">• Post-migration remediation and sequencing• Freeze and synchronize source environment

Our Success Stories

"AvePoint acted as a trusted advisor throughout the entire process of our SharePoint migration.

-Bryon Catlin, Information Services Manager, Charlotte County Government

- Moved 300+ GB to a hybrid SharePoint 2013
- Single solution for backup and management for hybrid environments
- Advanced solutions for automation and data protection

For a comprehensive list of new features in this release, please view our [Release Notes](#).

How to Buy AvePoint Products

201.793.1111 | Sales@AvePoint.com | Start your free trial today: www.avepointonlineservices.com
AvePoint Global Headquarters | 525 Washington Blvd, Suite 1400 | Jersey City, NJ 07310