

Email Migration with FLY

Swiftly consolidate and migrate your customer's on-premises or cloud email into Microsoft 365

Resolve Your Customers' Migration Situation in Three Easy Steps



STEP 1:

Analyze

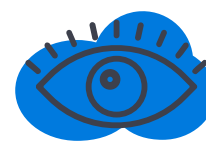
Gain insight to improve migration project planning. Find out what's important, or just collecting dust. Understand their existing architecture to avoid potential risks or pitfalls. See which mailboxes need to be discarded, re-worked, or migrated as-is.



STEP 2:

Migrate

Move Exchange, Gmail, IMAP/POP3 mailboxes and PST files to achieve your desired end goal with drag-and-drop ease. Then map, filter, and schedule the move, or just migrate in real time. Our Wizard guides you with helpful tips to make getting started a breeze.



STEP 3:

Monitor

Track migration progress and status with dynamic dashboards and detailed insights to validate their migration, generate reports that highlight actions taken, and always be in the know with automated updates sent directly to stakeholders.

Email Migration with FLY



FLY whizzes through the consolidation and migration of your customer's on-prem or cloud-based mail in Exchange, Gmail, or IMAP/POP3 formats into Microsoft 365. Tight timeline or budget? Our easy, breezy user experience guarantees you'll look like a pro!

With flexible licensing options—like flat, fixed rate licensing for unlimited content—costs will keep in check...and dollars will migrate into your bank account!

STEP 1:

 **Pre-Migration Analysis**

- **Know your mail.** Scan and identify the number and size of mailboxes that require updating, mapping, or deleting.
- **Get the details.** Generate detailed reports for their pre-migration analysis, export data to CSV files for deeper analysis.
- **Create a plan.** Create migration plans according to their project timetables – define the scope, filter policy, verification, method, and schedule. Plans can be reused in the future.

STEP 3:

 **Monitor Using Built-in Dashboards or Power BI Templates**

- **Track progress.** Monitor migration status and progress on the built-in dashboard, or by setting up a SQL connection to leverage our migration database. Create dynamic reports for throttling, performance, migration progress, and more with our Power BI templates!
- **Validate their migration.** Report on migrated data volumes and understand migration trends across sources and destinations.
- **Exec-level analysis.** Download or email executive reports on job count and status, mailbox count and status, and migration trend analysis to highlight the actions taken during the migration and demonstrate your proof of work.

STEP 2:

 **Migrate Using FLY Server / Desktop**

- **Drag-and-drop mode.** Move mailboxes, users, groups and resources from Exchange on-premises, Exchange Public Folder, Exchange Online, Gmail, other mailboxes supporting IMAP/POP3, and PST files into Microsoft 365 with drag-and-drop ease. Or, pull Exchange Online mailboxes back on-prem if your cloud plans change.
- **Tenant-to-tenant migration.** Migrate mail, associated public folders, and auto-complete lists between mailboxes in different Microsoft 365 tenants. Automatic provisioning of Exchange Online mailboxes by assigning Microsoft 365 licenses to destination end users reduces manual efforts.
- **Convert mailboxes to take advantage of Microsoft 365 faster.** Transform existing mailboxes into User, Shared, Group, or other Mailbox Type.
- **Take only what they need.** Filter based on content properties to take only what's relevant and leave behind content that's stale or no longer necessary. Full and incremental migration options capture changes as you go, even email deletions.
- **Migrate on their time.** Set up a schedule or migrate in real time.
- **Resume or rerun failed or stopped jobs.** Pick up the job from where it stopped or failed, or rerun jobs to correct failed files or items.
- **Automatic Outlook configuration.** FLY Assist ensures users' local Outlook is seamlessly reconfigured to their new Exchange Online mailbox. FLY Assist can be installed automatically by admins or sent to end users via custom-branded emails to guide them through the final steps.

Currently available via our Distribution network!elements.avepoint.com/buy